

-V/04 series steel valves

- V/04 SERIES STEEL VALVES



CARATTERISTICHE

Air inlet/extraction valve suitable for homes, offices, etc., equipped with good adjustability due to the manually adjustable flat disc, insulated on the inner face with 10mm thick polyethylene foam.

Construction:

Made of epoxy powder-coated sheet steel in white RAL 9010.
Sheet metal collar.

The valve body has a polyethylene foam gasket to ensure sealing on mounting collar or adapter or air channel. The 10 mm thick PE foam of the disc allows the valve to be sealed tightly.

Adjustment and measurement:

Airflow adjustment is achieved by turning the screw disc to change the passage distance (max. distance 20 mm). For each revolution of the disk, the distance varies by 1 mm.

The measurement of valve air flow rate is easily calculated by measuring the velocity of crossing air at a point and multiplying by the peripheral air passage area.

Fixing:

With steel clips built into the valve body, which fit onto the collar or compatible adapter. Connection can be made with flexible piping (or with "Ø125 adapters" for the Ø125 model), which do not require the collar and can act as a support for the valve itself.
The mounting collar can be attached to the substrate (plasterboard or other) using screws (not supplied) or other systems.

CONSTRUCTION



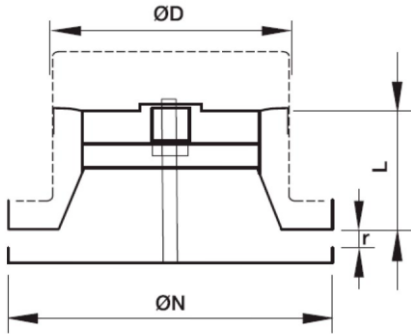
Valve body and screw disc



Mounting collar

DIMENSIONS AND TECHNICAL SPECIFICATIONS

Code	ØD (mm)	ØN (mm)	L (mm)	r (mm)*	thickness insulation (mm)	adjustment turns (0-max)*
VMC-04-125	125	160	60	var. 0-20	10 (inside the disk)	0...20
-V/04161	161	195	60	var. 0-20	10 (inside the disk)	0...20
-V/04200	200	238	63	var. 0-20	10 (inside the disk)	0...20



* If necessary, the valve can be adjusted to a distance $r = 30$ mm(max), however losing the peculiarity of having screw supported by two supports.

GRAPHICS

